

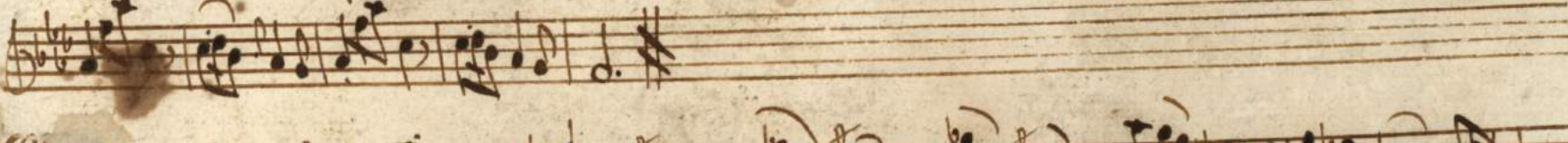


TRIO A DUO
VIOLINO, E BASSO.

del sign.^{re} Luis Boquerini
di Luca.

Violino Primo.

Tempo
51.



A page of handwritten musical notation on aged, yellowed paper. The page contains eight staves of music, each with a treble clef and a key signature of two flats (B-flat and E-flat). The notation is dense and includes various rhythmic values, slurs, and dynamic markings. The handwriting is in dark ink, and the paper shows signs of age with some staining and foxing. The music appears to be a single melodic line, possibly for a keyboard instrument like a harpsichord or spinet.

siue Minuet

Minuet

Handwritten musical notation for the Minuet section, consisting of three staves of music. The notation is in a single system with three staves. The first staff begins with a treble clef and a key signature of one flat (B-flat). The music is written in a 3/4 time signature. The first two staves contain melodic lines with various note values, including eighth and sixteenth notes, and rests. The third staff contains a more complex rhythmic pattern, possibly for a keyboard instrument, with many beamed notes and rests. The paper shows signs of age, including foxing and staining.

Trio

Handwritten musical notation for the Trio section, consisting of three staves of music. The notation is in a single system with three staves. The first staff begins with a treble clef and a key signature of one flat (B-flat). The music is written in a 3/4 time signature. The first two staves contain melodic lines with various note values, including eighth and sixteenth notes, and rests. The third staff contains a more complex rhythmic pattern, possibly for a keyboard instrument, with many beamed notes and rests. The paper shows signs of age, including foxing and staining.

Al Minuet. D. C.



SECONDO VIOLINO.

Pargo

t

The first system of the handwritten musical score consists of five staves. The top staff is in treble clef, and the bottom staff is in bass clef. The key signature is two flats (B-flat and E-flat), and the time signature is 2/4. The notation includes a variety of note values, including eighth and sixteenth notes, and rests. There are some markings above the first staff, including a small 't' and a plus sign.

The second system of the handwritten musical score consists of three staves. The top staff is in treble clef, and the bottom staff is in bass clef. The key signature is two flats (B-flat and E-flat), and the time signature is 2/4. The notation includes a variety of note values, including eighth and sixteenth notes, and rests. There are some markings above the first staff, including a small 't' and a plus sign.

A page of handwritten musical notation on aged, yellowed paper. The page contains ten staves of music, arranged in two systems of five staves each. The notation is dense, featuring a variety of note values, rests, and dynamic markings such as 'f' and 'p'. The paper shows signs of age, including foxing and some staining, particularly near the bottom right corner. The handwriting is in a cursive style typical of the 18th or 19th century.

Sigue Minuet.

Minuet

Handwritten musical notation for the Minuet section, consisting of three staves of music in 3/4 time with a treble clef and a key signature of one flat. The notation includes various note values, rests, and dynamic markings.

Trio.

Handwritten musical notation for the Trio section, consisting of three staves of music in 3/4 time with a treble clef and a key signature of two flats. The notation includes various note values, rests, and dynamic markings.

D. C. al Minuet

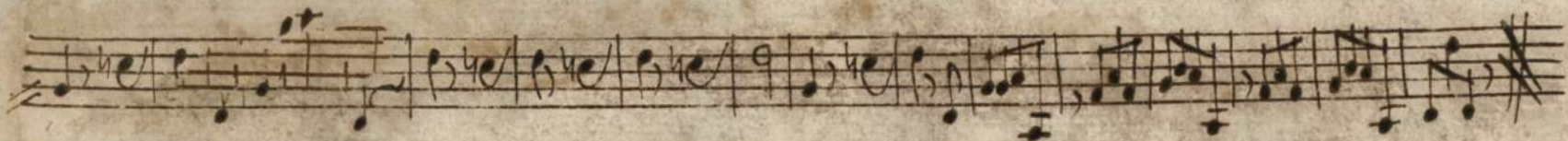
Largo

Basso

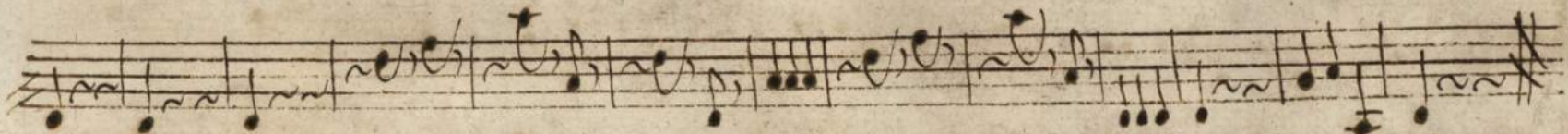
F

A handwritten musical score for Bass, consisting of ten staves. The piece begins with a tempo marking of 'Largo' and a key signature of one flat (B-flat). The first staff starts with a treble clef, a 6/8 time signature, and a common time signature. The music is written in a single line. The second staff continues the melody. The third staff shows a change in the bass line. The fourth staff marks the beginning of an 'Allegro' section, with a new key signature of two flats (B-flat and E-flat) and a 4/4 time signature. The fifth staff continues the melody. The sixth staff shows a change in the bass line. The seventh staff continues the melody. The eighth staff shows a change in the bass line. The ninth staff continues the melody. The tenth staff shows a change in the bass line. The score is written in a clear, legible hand.

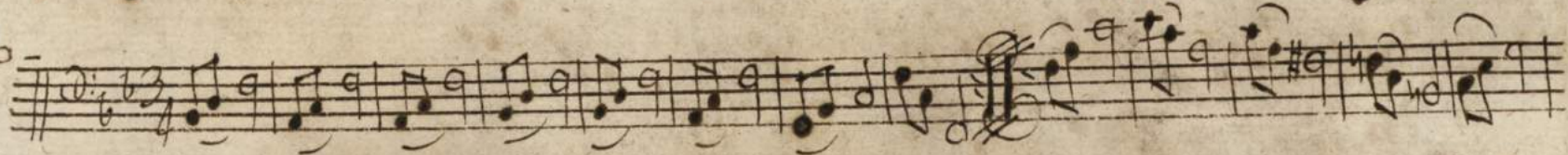
Volni supiro



Minuet



trio-



D. C. *Al Minuet.*