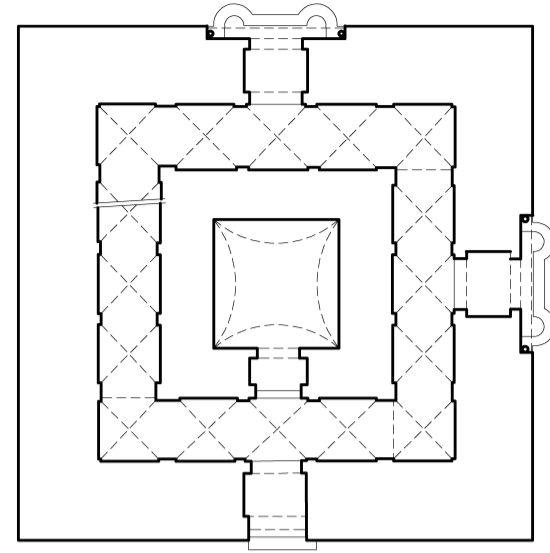
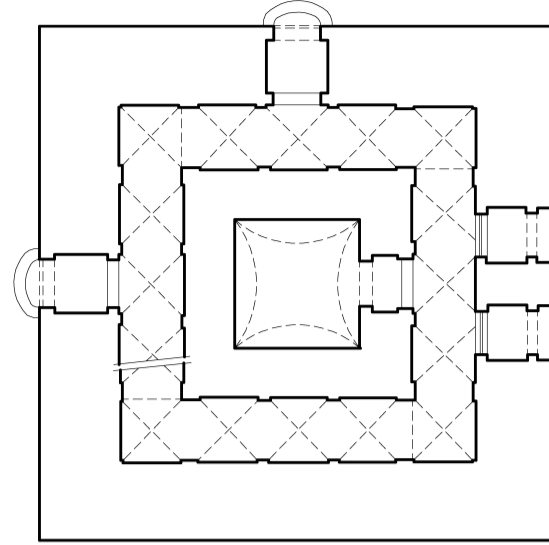


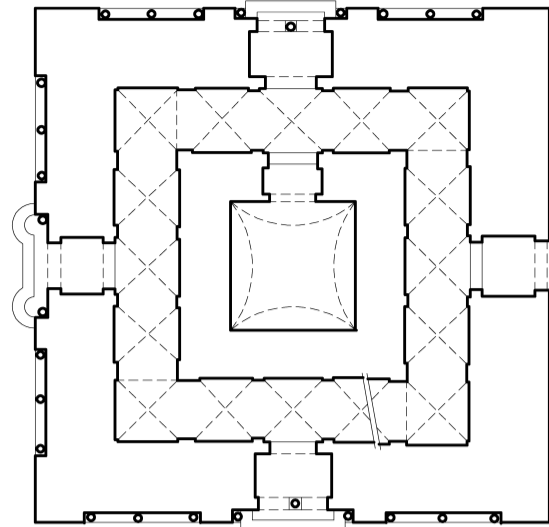
SECCIÓN ALMINAR NIVEL 1



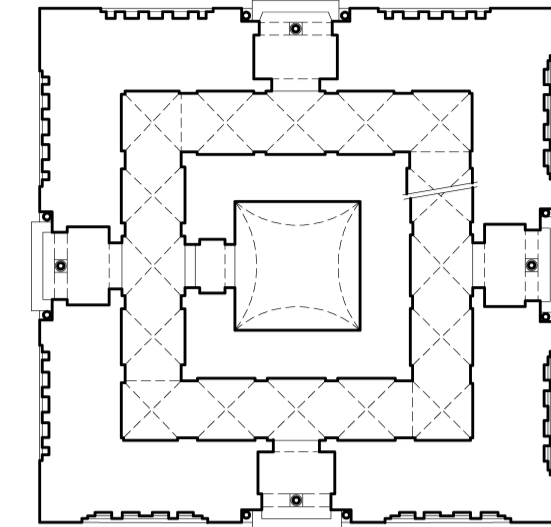
SECCIÓN ALMINAR NIVEL 2



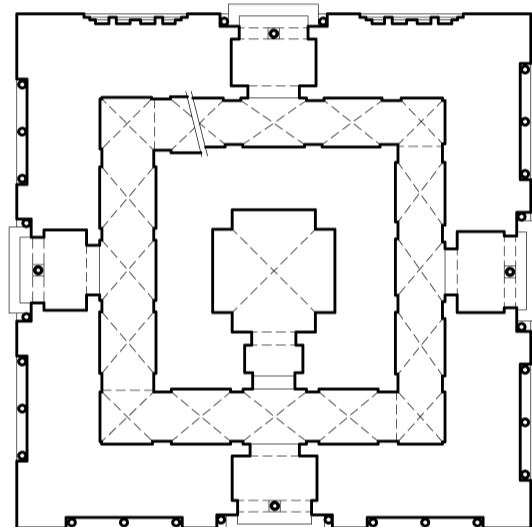
SECCIÓN ALMINAR NIVEL 3



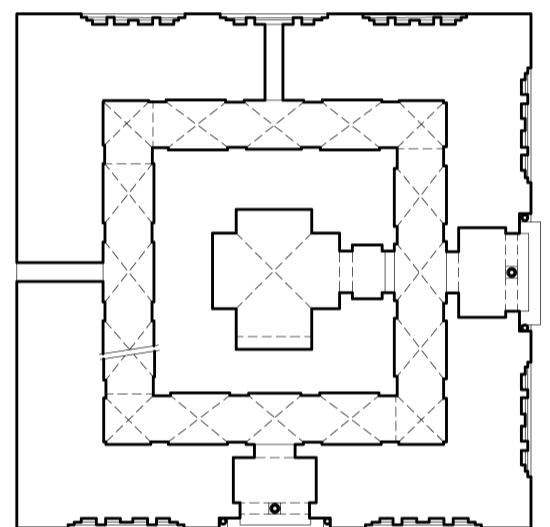
SECCIÓN ALMINAR NIVEL 4



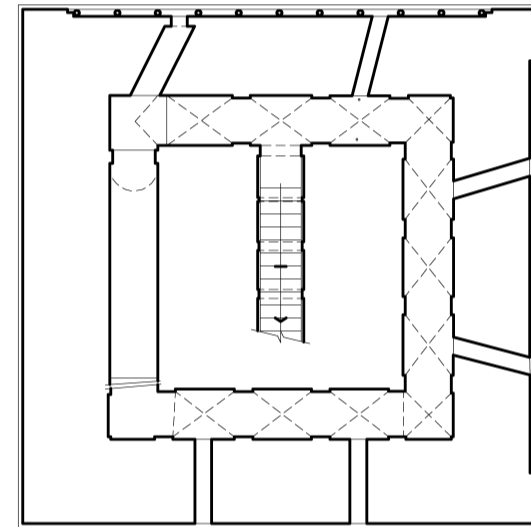
SECCIÓN ALMINAR NIVEL 5



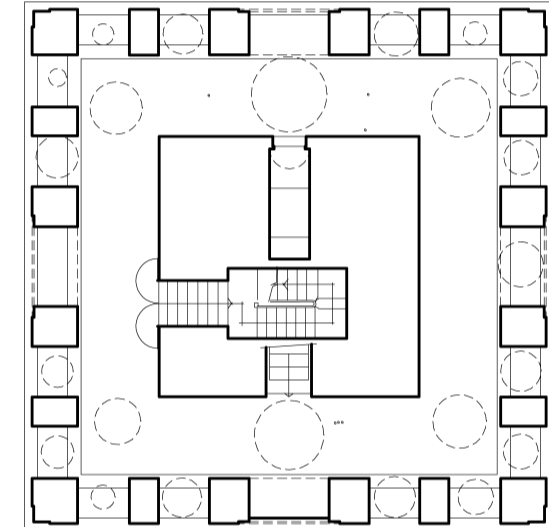
SECCIÓN ALMINAR NIVEL 6



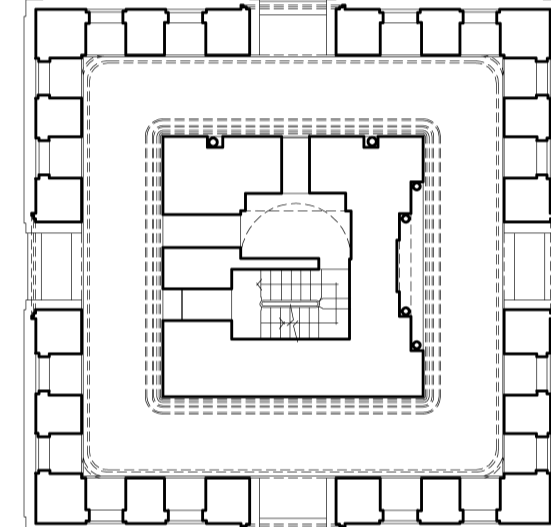
SECCIÓN ALMINAR NIVEL 7



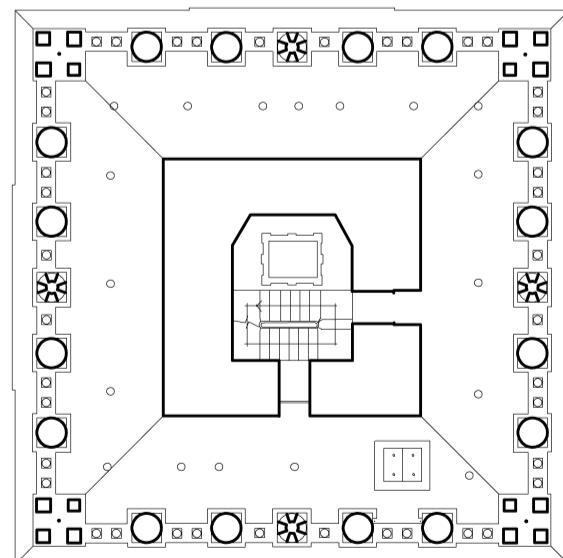
SECCIÓN ALMINAR NIVEL 8



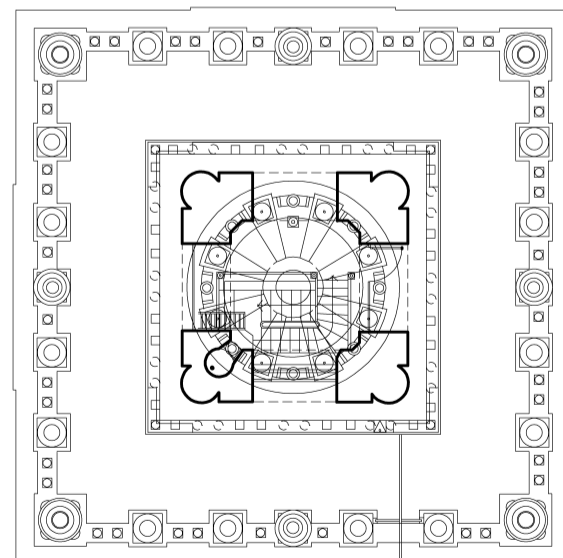
SECCIÓN CUERPO DE CAMPANAS 9



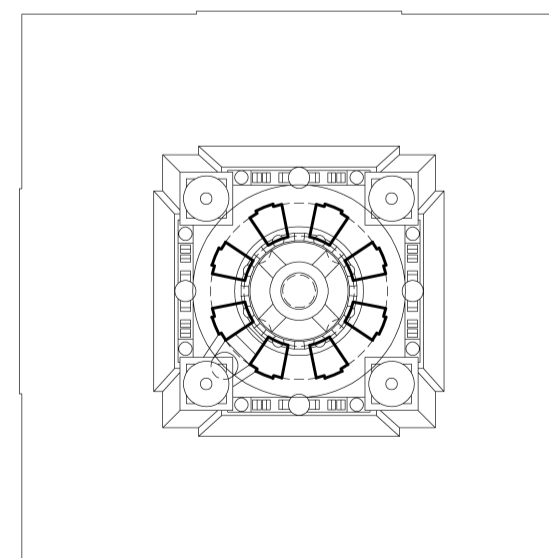
SECCIÓN CUERPO DE CAMPANAS 10



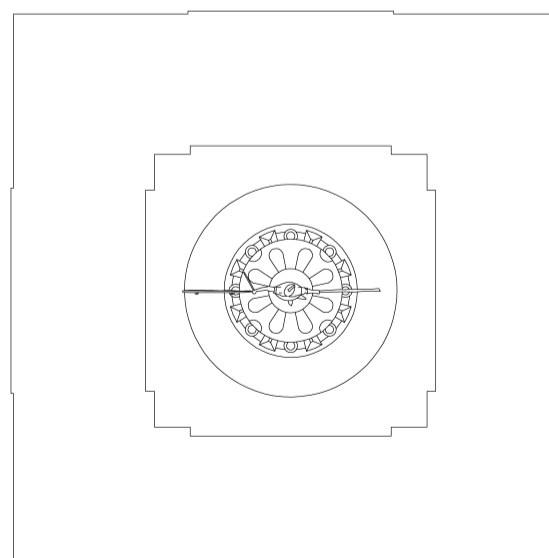
SECCIÓN CUERPO DE LAS AZUCENAS 11



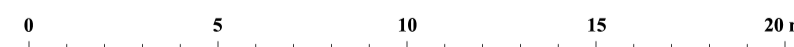
SECCIÓN CUERPO DEL RELOJ 12



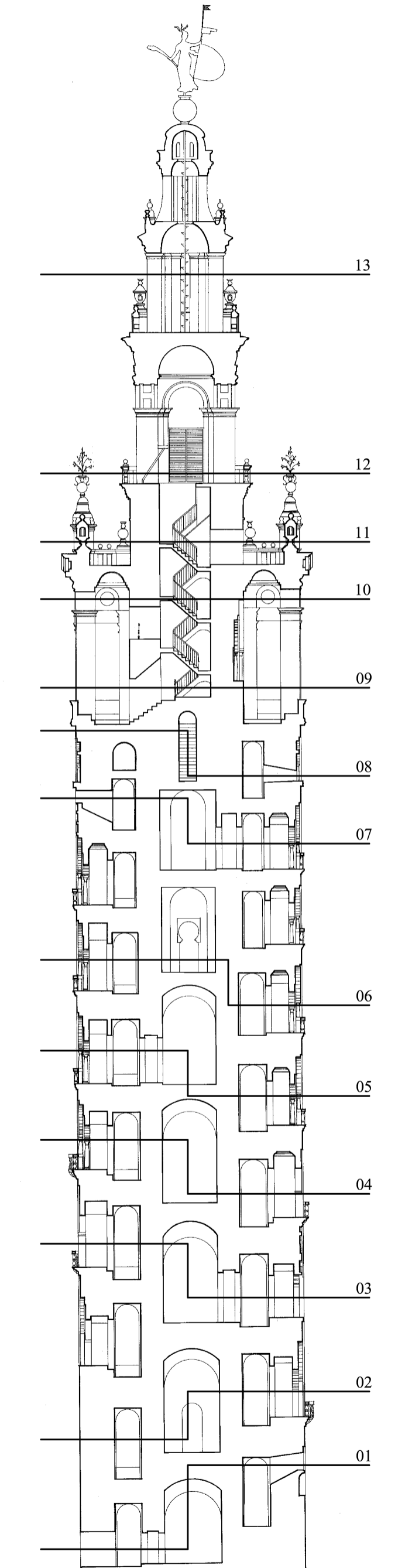
SECCIÓN CUERPO DE LAS ESTRELLAS 13



VISTA AEREA DE PENACHO



CATEDRAL METROPOLITANA DE SEVILLA. PLANTAS DE LA GIRALDA.
A. RODRIGUEZ CURQUEJO /del.



SECCIÓN ESTE-OESTE ÍNDICE