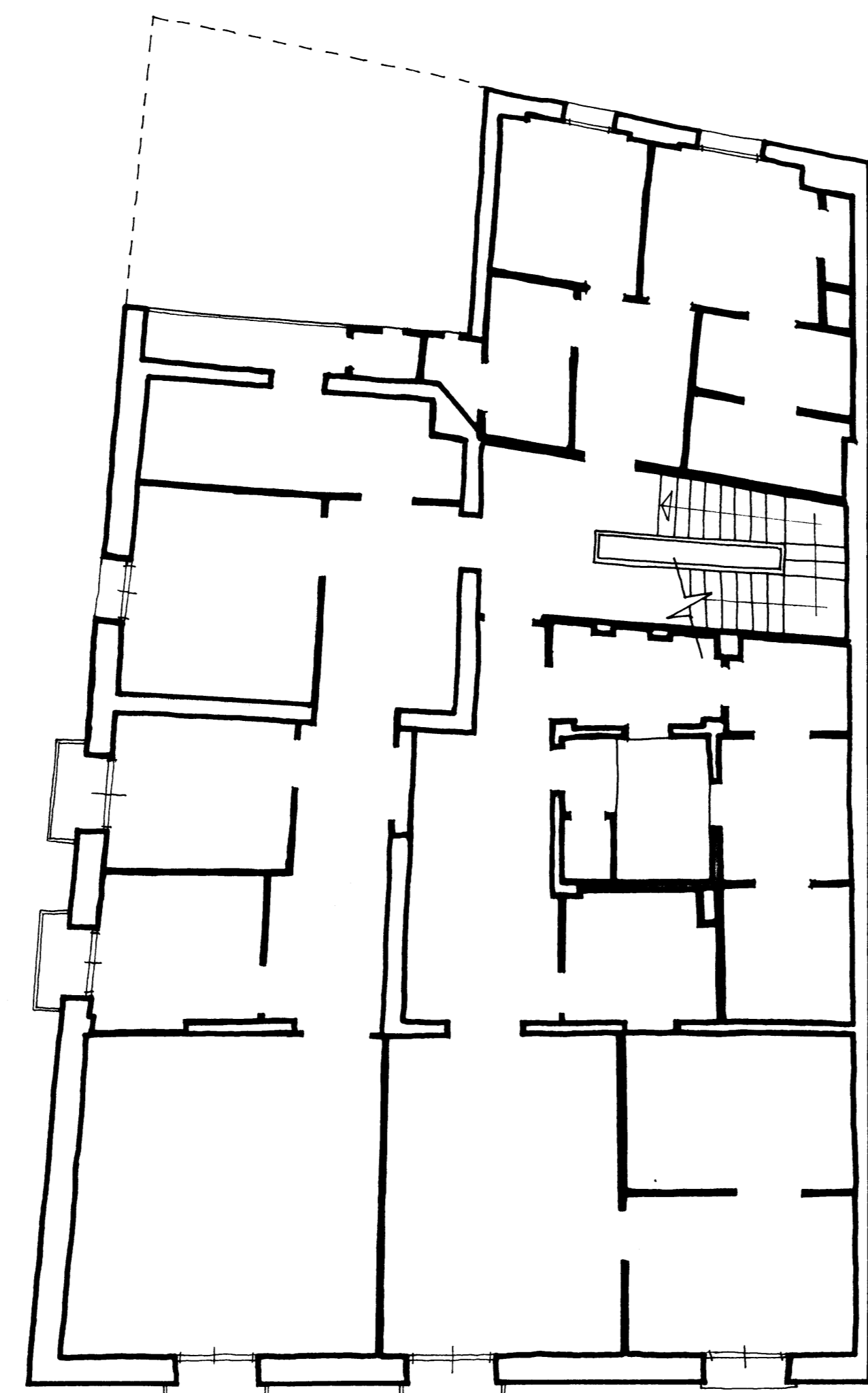
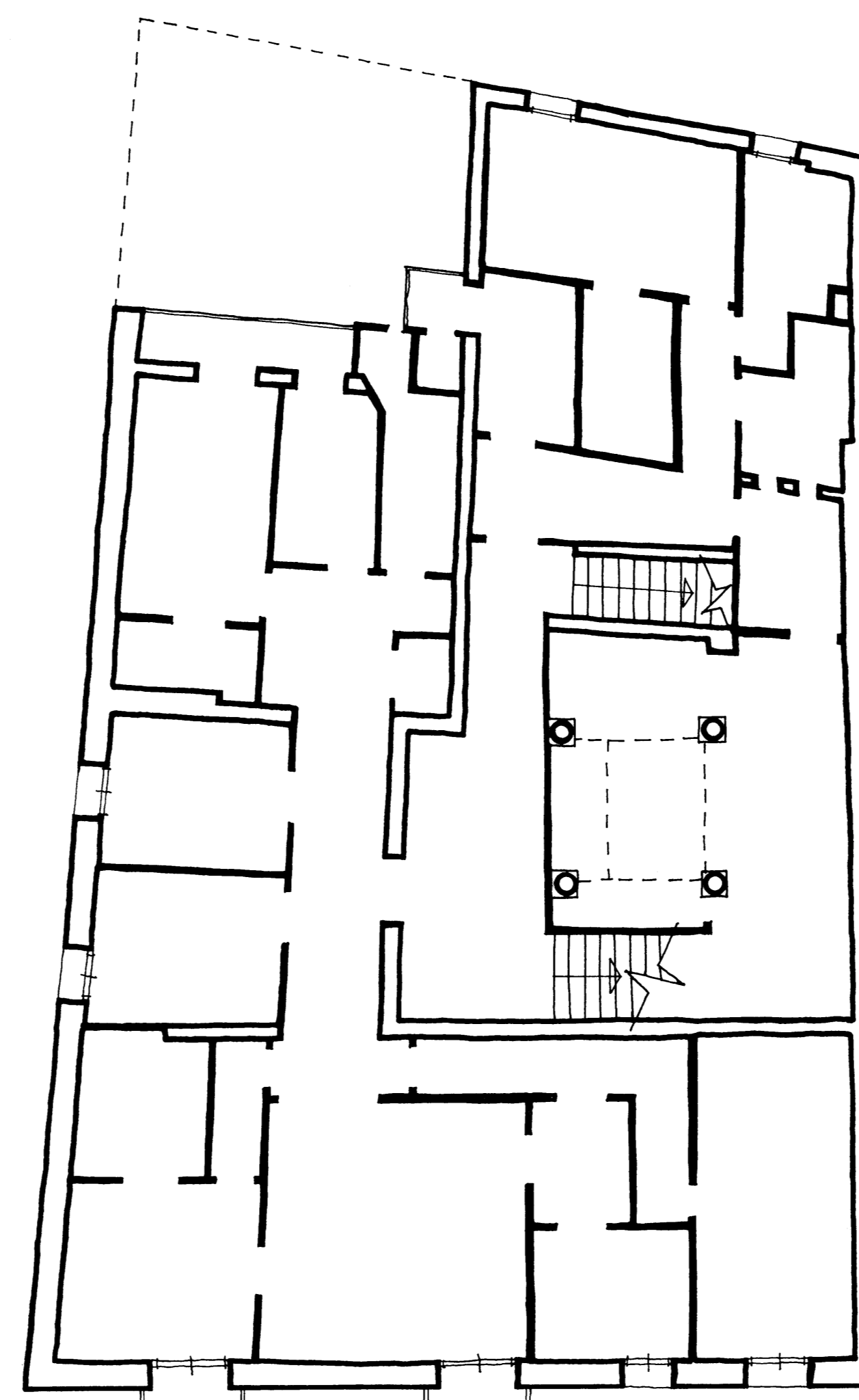


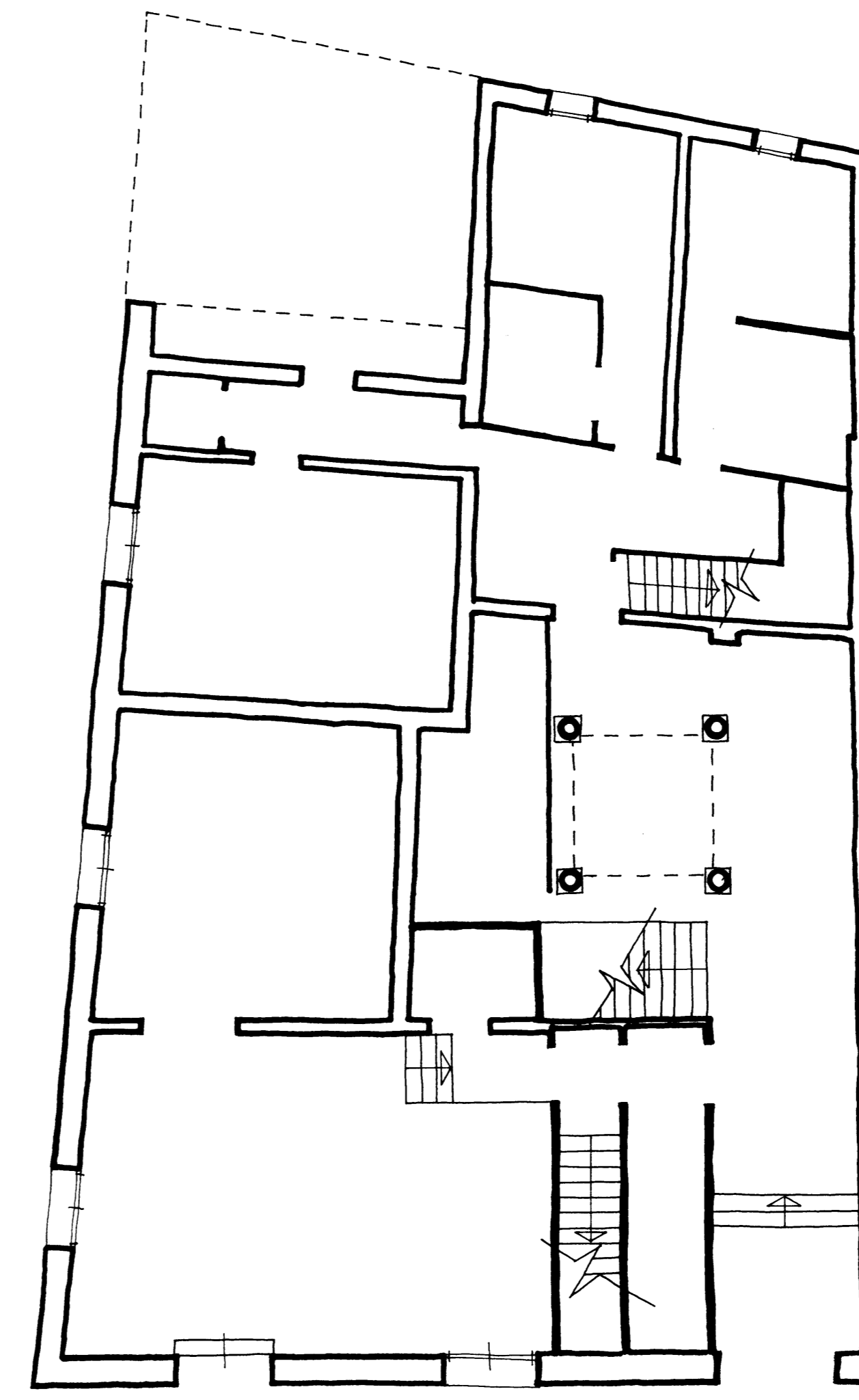
PLANTA TERCERA



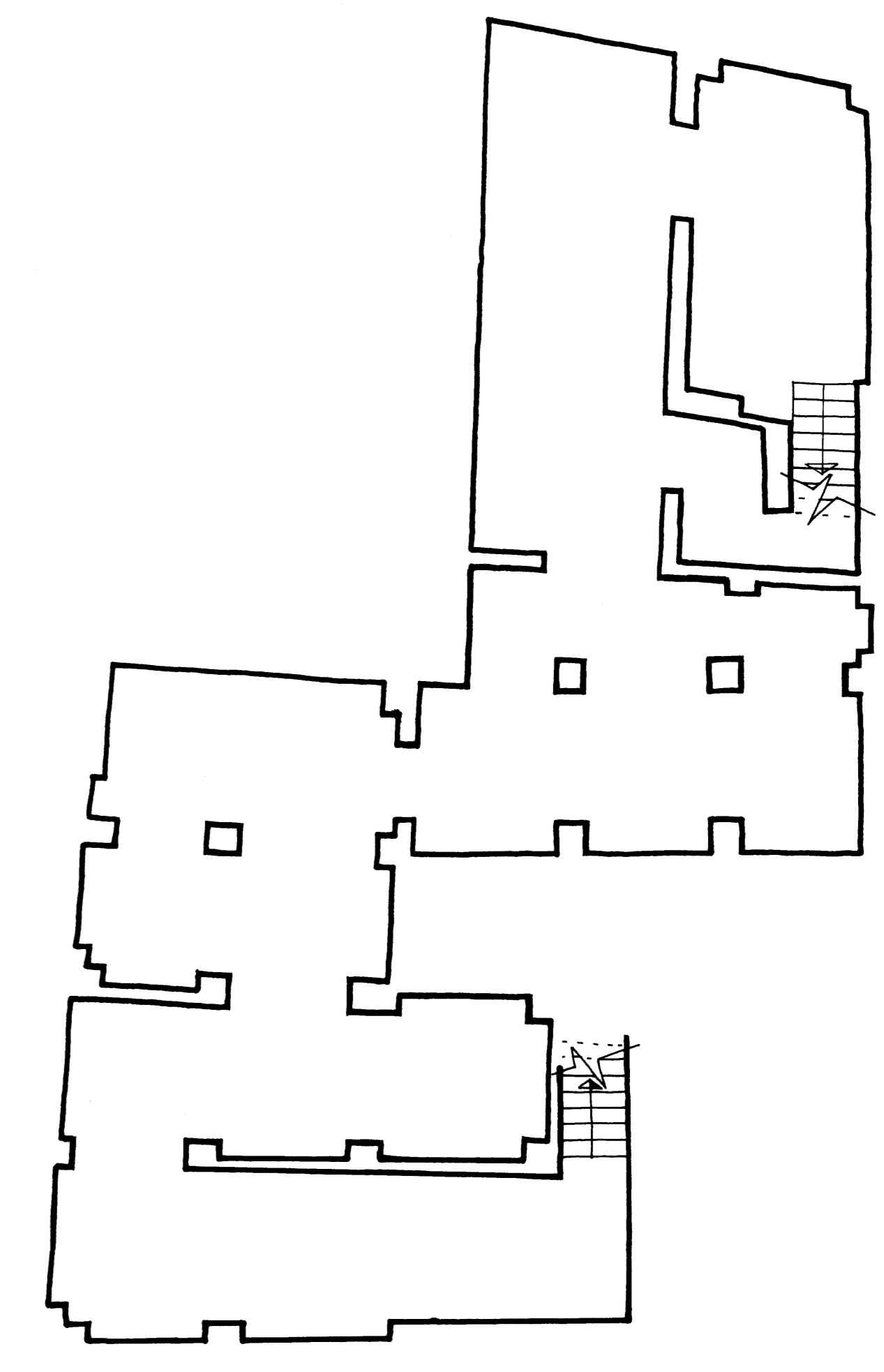
PLANTA SEGUNDA



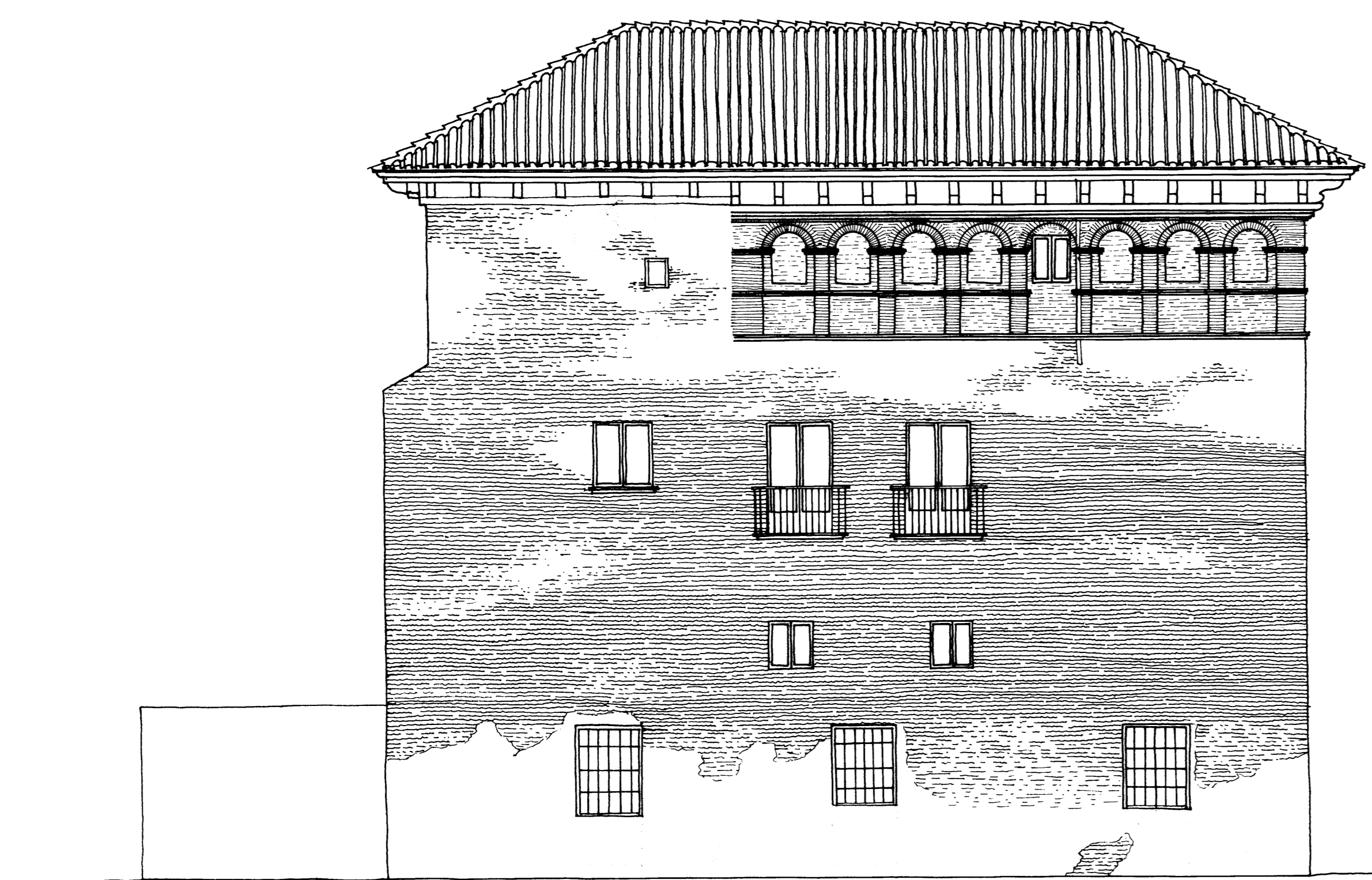
PLANTA PRIMERA



PLANTA BAJA



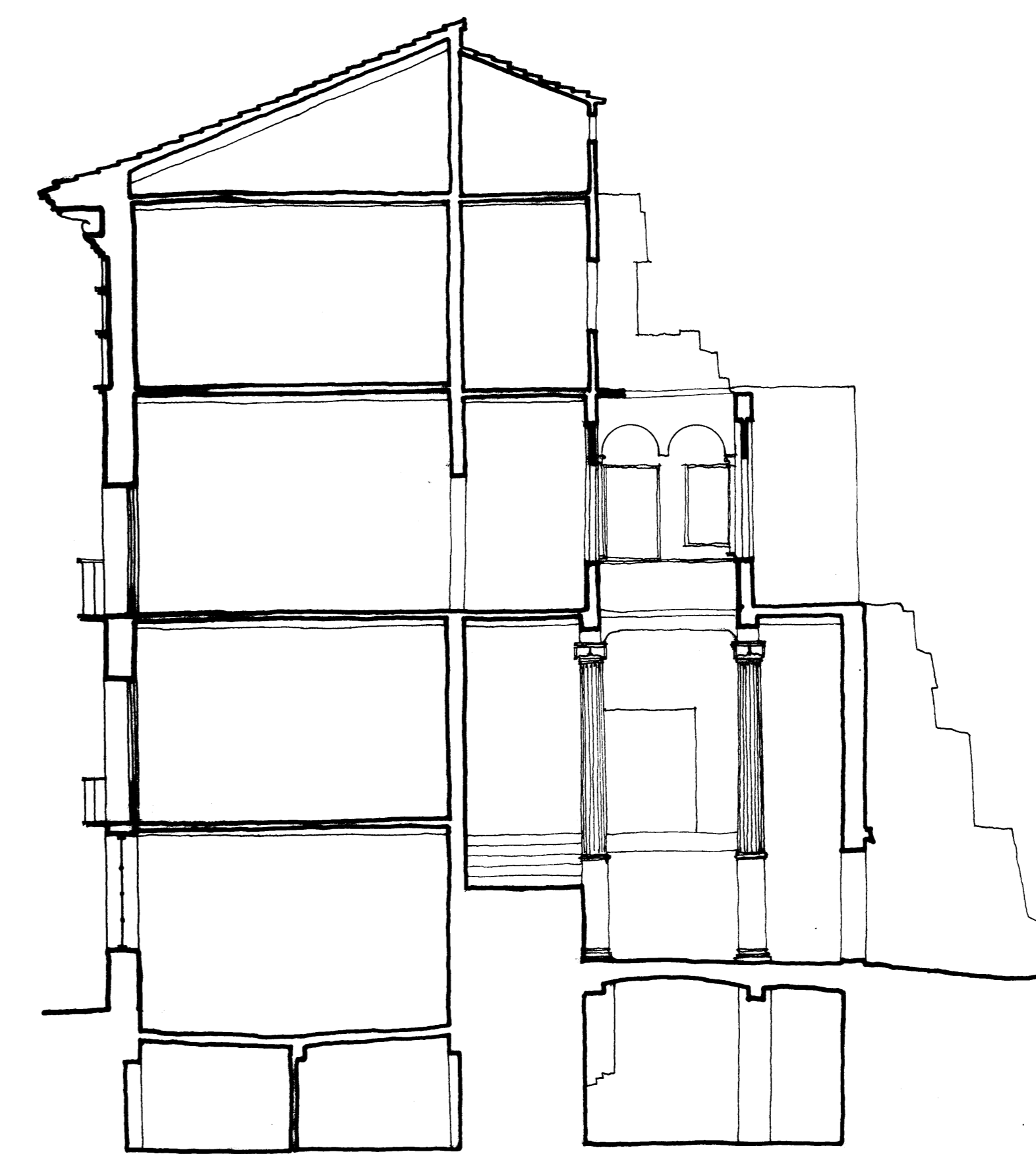
PLANTA SOTANO



ALZADO LATERAL



ALZADO PRINCIPAL



PALACIO EN CALLE D. JUAN DE ARAGON Nº 7
ZARAGOZA
PROYECTO DE CONSOLIDACION
ESTADO ACTUAL E: 1/100
A. ALMAGRO/ARQ. MARZO 1977